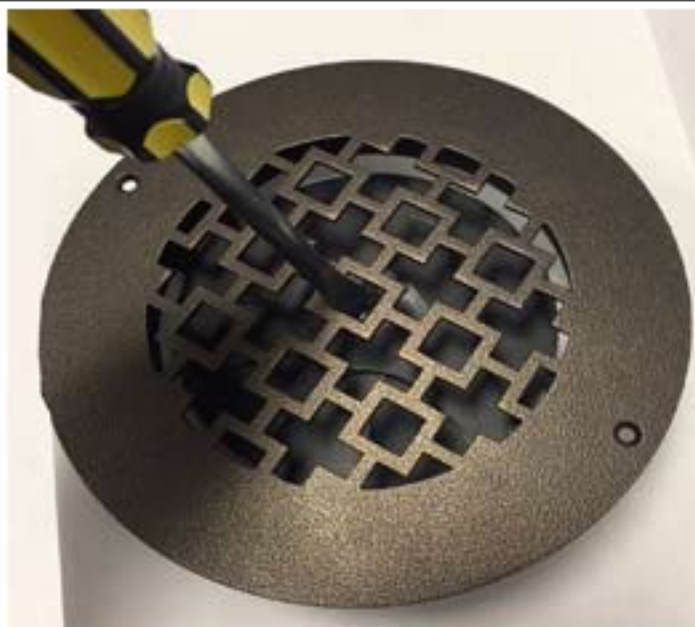
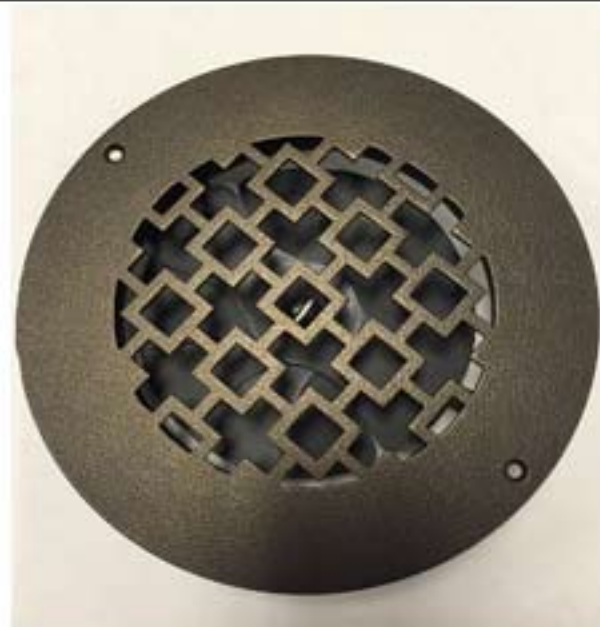


# SteelCrest Gold Series

## Custom Round Wall Registers

### Butterfly Damper Instructions



Once register is installed, access damper control mechanism in the center of the faceplate. Using a flat head screw driver, turn the screw of the damper control right (clockwise) to open the blades (see Damper Open photo below) or left (counter clockwise) to close the blades (see Damper Closed photo below)



**Damper Open**



**Damper Closed**



**\*\*Please use a piece of soft cloth around the screw driver flat head tip to protect the finish during damper adjustment\*\***